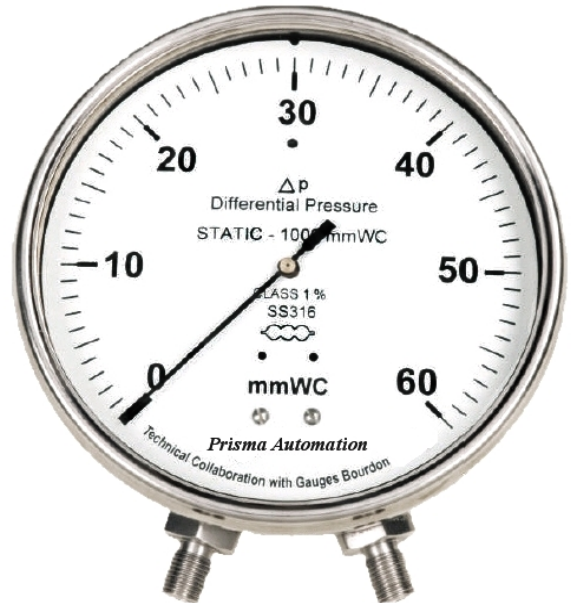


## Differential Pr. Gauges-Capsule Type

**MODEL : DPG-C**

### Features

- Low differential pressure measurement with high accuracy
- Sensing element- Capsule in SS316L
- Screwed connection
- Accuracy  $\pm 1\%$  FSD
- General stainless steel capsule differential pressure gauges are designed for measuring small differential pressures on clean & dry air or gas system



### Specifications

<b>Dial</b>	4"(100mm) / 6"(150mm)
<b>Case &amp; Bezel</b>	SS304 / SS316, weatherproof to IP-67 (IS:13947 Part 1)
<b>Window</b>	Toughened Glass with rubber ring
<b>Sensing</b>	Capsule in SS316L
<b>Connection</b>	½ " NPT (M) as standard (other on request)
<b>Range</b>	Any range between 0 to 60 mm WC to 0 to 1000 mmWC
<b>Static Pressure</b>	10 times the range
<b>Accuracy</b>	$\pm 1\%$ FSD
<b>Temperature suitability</b>	(-) 20°C to 80°C

**Ordering Information**

**MODEL : MDC**



**MOUNTING**  
S Bottom Entry, Surface Mounting  
V Bottom Entry, Local Mounting

**DIAL**  
10 - 100 mm  
15 - 150 mm

**CASE**  
S4 SS304  
S6 SS316

**CAPSULE**  
L SS316L

**MOVEMENT**  
A SS304  
B SS316

CONNECTION			
SIZE	TYPE	MALE / FEMALE	METRIC THREADS
6 1/4"	NT NPT	M Male	18 M - M 18 x 1.5
10 3/8"	BP BSP	F Female	20 M - M 20 x 1.5
15 1/2"	BT BSPT		24 M - M 24 x 1.5
20 3/4"	PF PF		27 M - M 27 x 2
25 1"	GS Gas		33 M - M 33 x 2
32 1.1/4"	NS NPSM		XX - Any other
40 1.1/2"			

**OPTION**  
CE CE Certificate  
N NACE-MR-01-75  
O O<sub>2</sub> Cleaning  
X Accessory - Refer  
Catalogue ACC

**STATIC PRESSURE**  
10 Times range

**UNIT**  
E mmWC  
F Pl. specify

**RANGE**  
Please Specify

The recommendations made in this catalogue are to be used as intended guide. No guarantee of material can be undertaken since other factors may affect the performance. We reserve the right to change the specifications mentioned in this catalogue without any notice as improvements & development is a continuous process. Responsibility of typographical errors is specifically disclaimed.